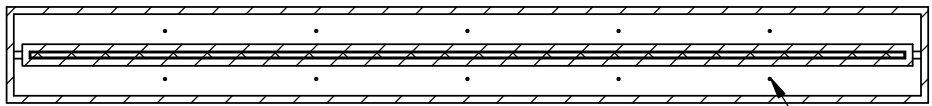
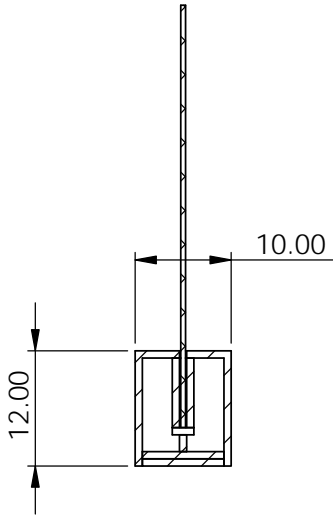
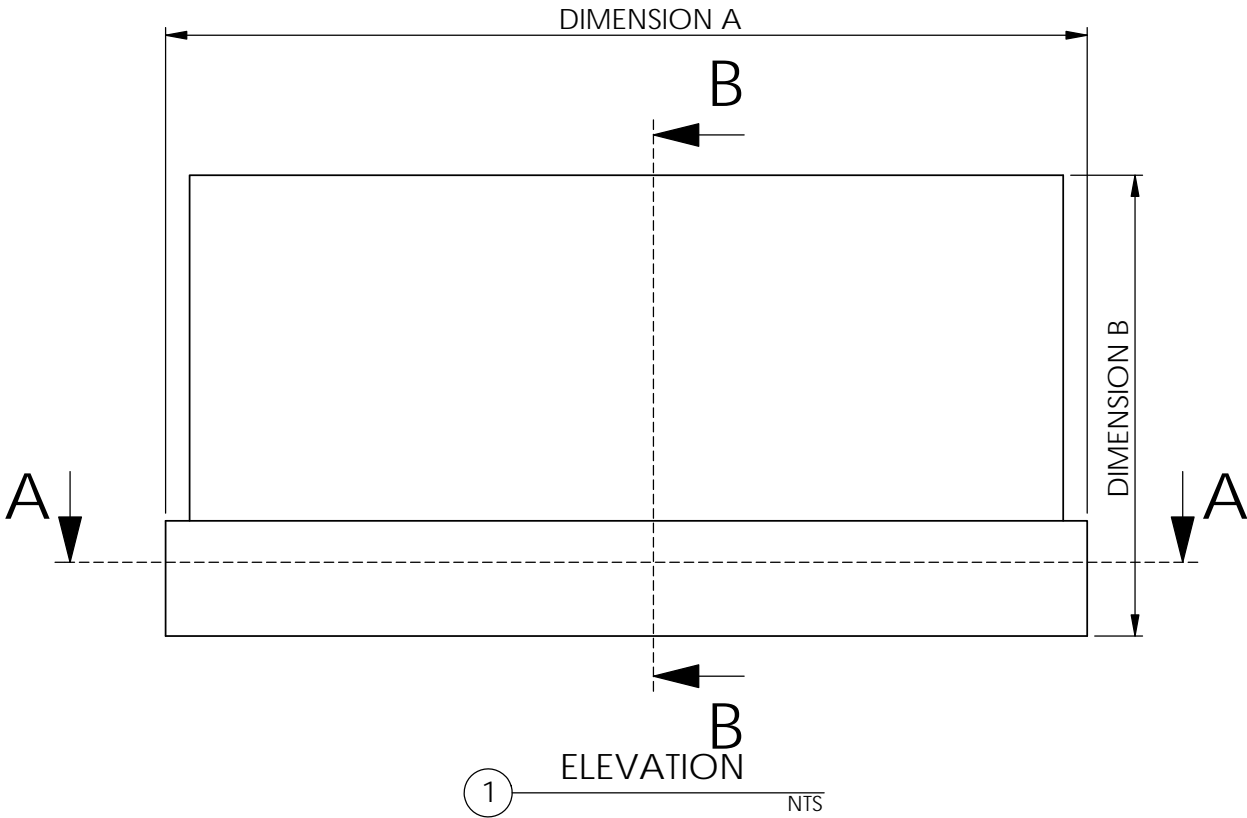
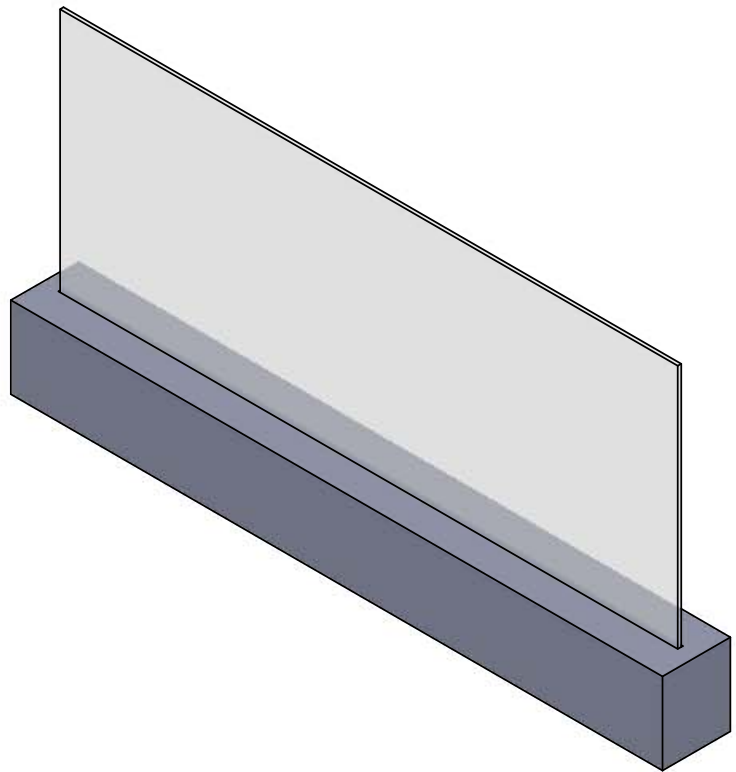


CONFIGURATION	DIMENSION A	DIMENSION B
SMALL	72"	36"
MEDIUM	96"	48"
LARGE	120"	48"



SECTION A-A

FASTENER ATTACHMENTS
ON 15.75" CENTERS.



SECTION B-B

V FOLD
OUTER BOX
CONSTRUCTION

1/8" GAP ALL AROUND
(SILICONE ADHESIVE
APPLIED AFTER
INSTALLATION)

CONSTRUCTION
ADHESIVE
-FEATURE TO
BASE PLATE-
ATTACHMENT
BY CONTRACTOR

BASE PLATE FASTENER
ATTACHED TO HORIZONTAL
MOUNTING SURFACE
BY CONTRACTOR
**NOTE: FASTENERS SHOULD
BE FLUSH MOUNT**

FOR GAUGE COMPATABILITY
INFORMATION REFER TO
WWW.3-FORM.COM/GAUGE

DIMENSIONS WITHIN THIS
SURROUND CAN BE MODIFIED
WITHIN PANEL OR
HARDWARE LIMITATIONS, SEE
SOLUTION DOCUMENTS

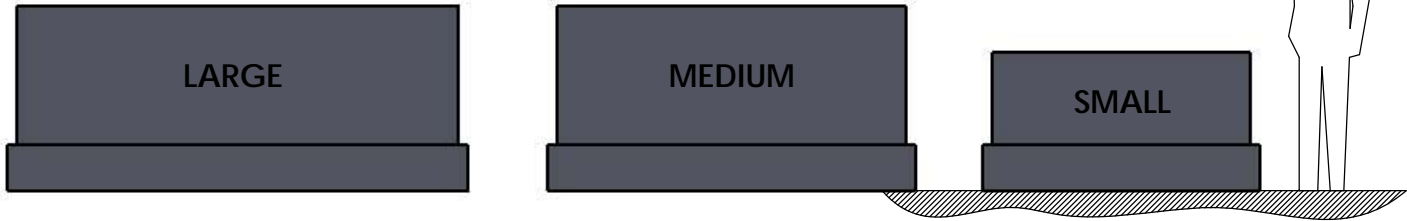
KEYED NOTES

REFER TO READY TO GO
DOCUMENTS FOR PART
QUANTITIES, PRICING, AND
KIT INFORMATION

REFER TO 3form ANCHORING
SOLUTION DOCUMENT FOR
ANCHORING INFORMATION
AND LIMITATIONS; WWW.3-FORM.COM/ANCHORING

ALL DIMENSION IN THIS
DOCUMENT BASED ON MAX
PANEL SIZE RELATIVE TO
SOLUTION

FOR TECHNICAL INFORMATION
REFER TO
WWW.3-FORM.COM/HARDWARE



200.29 - READY TO GO SOLUTION

CONFIDENTIAL: This drawing may contain proprietary information including design concepts, drawings and details that are protected by copyright and are to be treated as confidential. You must not disclose copy, circulate or use the information contained in this drawing without the consent of 3form or for any non-3form supplied project. This drawing is intended only for the use of the addressee(s). If you are not the intended recipient, or the person responsible to deliver it to the intended recipient, you may not use, distribute or copy this drawing.

NOT FOR CONSTRUCTION, DESIGN AID ONLY
11X17 SHEET, DO NOT SCALE DRAWING
RTG - 200.29 -

200.29
LAST MODIFIED DATE: 3/16/2017

